

World of Coats *epic*

COATS
epic



Coats *epic* is a polyester-wrapped thread with a polyester filament core, ideal where fineness, high seam strength and high temperature stability are required. Epic's specially formulated lubricant delivers excellent sewing performance at low tension under the most demanding of conditions.

Main Uses:

- Fashion apparel
- Blouses and shirts
- Jackets and dress slacks
- Lingerie and swimsuits
- Uniforms and workwear
- Jeanswear
- Various leather articles



Features and Benefits:

- Coats *epic* is a high-tech corespun thread that combines a high tenacity polyester filament core with a polyester fibre wrap to make a versatile and reliable thread. Coats *epic* is ideal for delicate garments as well as jeans and workwear.
- Specially lubricated to deliver outstanding sewing performance in the most demanding applications
- The high strength polyester filament core allows the use of finer thread sizes, giving better seam appearance without compromising seam strength
- Excellent abrasion resistance makes Coats *epic* ideal for jeans and workwear
- Certified to Öko-Tex Standard 100, class 1, the most stringent class covering baby wear

World of Coats

- Coats has been the world's leading thread company for over 200 years and is the only truly global thread supplier.
- With manufacturing plants in over 40 locations and sales and distribution in more than 60 countries, Coats is uniquely placed to serve your thread needs anywhere in the world.
- Our state of the art colour communications management system, Coats ColourTalk®, enables exact sample matching and colour approval almost instantaneously between locations around the globe.

One colour range. One specification. Worldwide.

Coats operates to a global specification for Coats *epic* with quality audited by one centrally located team.

POLYESTER
CORESPUN WITH
POLYESTER WRAP

Product Information



www.coats.com



Global Offer Tex. no.	Total Dtex	Ply	Target strength in grams	Elongation% min - max	Recommended needle size* Singer/Metric
18	210	2	850	13 - 18	9-11 / 65-75
24	250	2	1,020	14 - 19	10-14 / 70-90
30	350	2	1,530	14 - 19	12-16 / 80-100
40	450	2	2,020	15 - 21	14-18 / 90-110
60	700	2 or 3	3,570	15 - 21	18-21 / 110-130
80	900	2	4,030	17 - 24	19-22 / 120-140
105	1,100	2	4,900	17 - 24	21-23 / 130-160

(*Needle size recommendations are a guide only and ultimately depend on the sewing application)



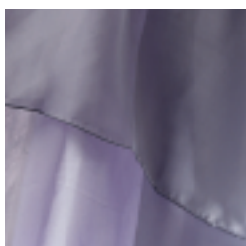
Physical and chemical properties of polyester corespun:

Thermal Properties

- Melts at 250 - 260°C, softens at 220 - 240°C
- Shrinkage less than 1% @ 150°C

Chemical Properties

- Mineral acids: Resistant to most mineral acids
- Alkalis: Essentially unaffected by weak alkalis, but less resistant to stronger alkalis, especially at higher temperatures.
- Organic solvents: Generally unaffected, but soluble in some phenolic compounds.
- Bleaching: Unaffected
- Insects / microorganisms (mildew, rot): Unaffected
- Laundering / dry cleaning: Unaffected
- Moisture regain: 0.4%



Coats *epic* fastness properties

Wash Fastness	(ISO 105 CO3)	Grade 4
Water Fastness	(ISO 105 E01)	Grade 4
Rub Fastness	(ISO 105 X12)	Grade 4
Hypochlorite Fastness	(ISO 105 NO1)	Grade 4
Dry Cleaning Fastness	(ISO 105 D01)	Grade 4
Perspiration Fastness	(ISO 105 EO4)	Grade 4
Light Fastness	(ISO 105 B02)	Grade 4

(These fastness grades represent minimum performance levels and, in practice, the majority of shades will exceed these levels)

